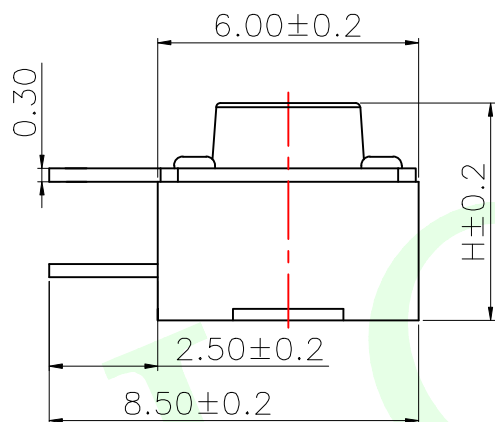
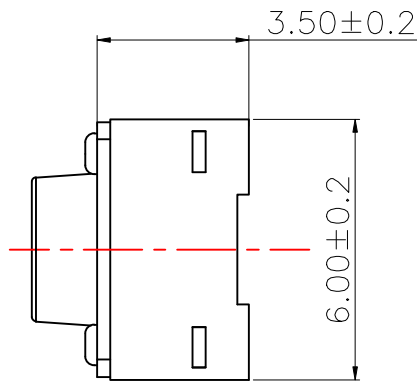
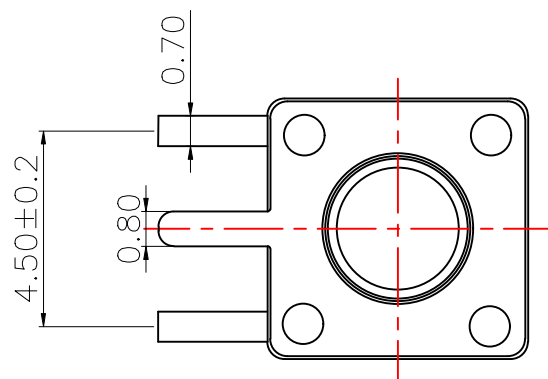
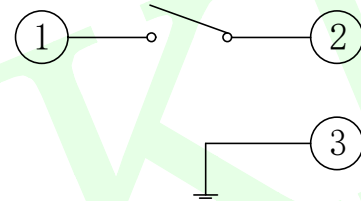


RoHS Compliant

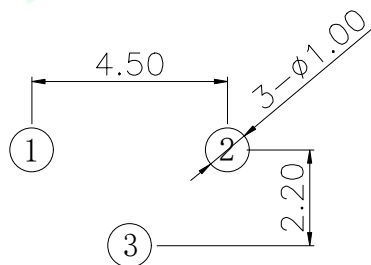


主要技术规格:

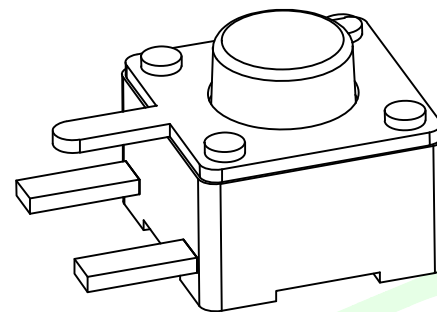
1. 额定值: 50mA DC12V
2. 接触电阻: $\leq 50\text{m}\Omega$
3. 操作力: $250 \pm 40\text{gf}$
4. 行程: $0.25 \pm 0.1\text{mm}$
5. 绝缘电阻: $\geq 100\text{M}\Omega$
6. 抗电强度: 250V 50HZ 1Min.
7. 寿命: 100,000 Cycles



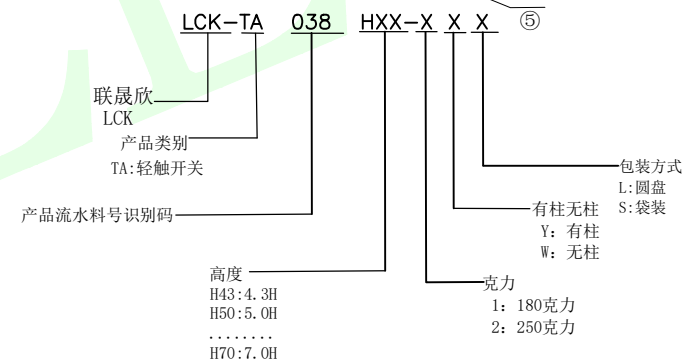
电路图



PCB. 焊接图



H
4.3
4.5
5.0
5.5
6.0
6.5
7.0



5	引脚、触点	黄铜	1	镀银
4	基座	PPA	1	耐温280℃ (黑色)
3	簧片	不锈钢	1	覆银
2	盖板	黄铜	1	镀铜锡
1	按钮	PPA	1	耐温280℃ (黑色)
序号	零件名称	材料规格	数量	备注

QUADRANT POINT
TANGENCY POINT
INTERSECTION POINT

QPT
TP
IP



联晟欣连接器 (深圳) 有限公司
Lianshengxin Connector (Shenzhen) Co., Ltd

UNLESS OTHERWISE
SPECIFIED, TOLERANCE:
X. ±0.25
X.x ±0.20
X.xx ±0.15
ANGULAR ±3°

DESIGN Andy DATE 2014.12.24
CHECKED DATE
APPROVED DATE
PART NO: LCK-TA038HXXX-XXX
DRAWING NO:

TITLE: TACRILE SWITCH
REV: 04 SCALE: 1:1 UNIT: mm
SIZE: A4 SHEET: 1/1